



2016 Goals
page 2



Get Involved
page 3



Donor Spotlight
page 4



NEWSLETTER

Summer 2016

Melissa chose life

Despite financial stress and the fact that her baby might be born with a disability, Melissa* chose life and Cradle of Hope was able to help.



During her first trimester of pregnancy, Melissa got very ill and was not able to continue her job at Home Depot. She was able to get some of her pay, but it did not cover her rent or expenses. She is also in the middle of a separation from her husband, which has impacted her financially, as well as dealing emotionally with the fact that her baby might be born with Down's Syndrome.

Melissa has three other children living with her. In order to avoid future financial crisis, her oldest daughter is going to move in to make sure the family is able to stay in their home. Melissa hopes to be able to return to work during her second trimester. Melissa was denied Emergency Assistance and she does not receive food assistance.

Melissa is hard working and has lived a very difficult life. She is overwhelmed with the reality of what is happening in her life, but she chose to be courageous. Thanks to the donors at Cradle of Hope, Melissa was able to pay her delinquent rent and relieve some of her stress. She now feels hopeful about her future.

* Name has been changed.

What's New?

New services offered by CoH

Effective July 2016, Cradle of Hope (CoH) is excited to offer our clients the following expanded services:

- Financial Assistance
 - Rent/Mortgage
 - Utilities
 - Medical Costs
 - Child Care
- Material Assistance:
 - Portable Cribs
 - Monthly Transportation Cards
 - Wellness Baskets
- Online Resources
 - Education
 - Employment
 - Parenting
- New website
 - www.cradleofhope.org



Clients must be a MN resident and facing a crisis related to their pregnancy or birth of a child under 4 months.

Cott Goals for 2016

Cribs Goal:



Distribute 1,000 portable cribs so 1,000 babies have a safe place to sleep.

Cost: \$75,000 for 1,000 cribs
Need: \$19,425 for 259 cribs



Transportation Goal: Distribute 42 monthly transportation cards so moms can look for a job and provide for their family financially.

Cost: \$3,570 for 42 cards
Need: \$2,550 for 30 cards

Wellness Baskets Goal:



Distribute 120 baskets filled with essential baby items to help mom and baby begin

their life together.

Cost: \$12,000 for 120 baskets
Need: \$6,000 for 60 baskets

Rent/Mortgage Goal:



Provide 240 families with rent/mortgage assistance so they can stay in their homes during the pregnancy.

Cost: \$180,000 for 240 families
Need: \$13,500 for 18 families

Utilities Goal:



Provide 50 families with utility assistance for one family for one month.

Cost: \$12,500 for 50 families
Need: \$6,500 for 26 families

Medical Costs Goal:



Provide 18 families with medical costs assistance.

Cost: \$4,500 for 18 families
Need: \$2,500 for 10 families



Child Care Costs Goal:

Provide 6 families with child care costs for up to one month so mom can find a job and provide for her family financially.

Cost: \$9,900 for 6 children
Need: \$6,600 for 2 children



ways your gift saves lives

\$1000

Provides rent/mortgage assistance to keep mom and her family in home during the pregnancy.

\$75

Provides a new, safe crib for one baby.

\$50

Provides transportation for mom to secure employment or visit her baby in the NICU.

\$500

Provides 2 weeks of child-care so mom can focus on finding a job.

\$25

Provides diapers & wipes to a family in need.

\$250

Provides utility assistance for one family for one month.

Sponsors and grants cover administrative costs so 100% of your donation goes to those in need.

Get Involved with Cradle of Hope

There are many ways you can help Cradle of Hope encourage life and provide a transition from desperation to hope.

Host a Drive

In order to help moms choose life, it is essential to support her through this journey. In addition to providing financial support, we provide material assistance to alleviate stress. Host a drive at your work, church, school, local agency/store, or neighborhood and begin collecting baby items and monthly transportation cards today.

Help with Wellness Baskets

Cradle of Hope provides wellness baskets for new moms filled with basic necessities like diapers, wipes, bottles and clothing to help mom and baby begin their new lives as a family. You can help by purchasing baby items and packaging materials for the baskets; arranging a day to assemble the baskets on your own or at Cradle of Hope.



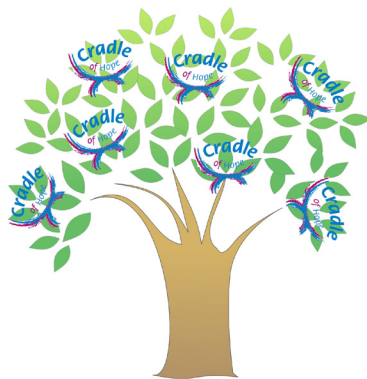
Become a Cradle of Hope Office Assistant

We rely on the support from many individuals and agencies to save lives together. Spend a few hours each week at Cradle of Hope entering client information into the computer, answering phones, writing thank you notes and more.



Cradle of Hope Giving Tree

Provide support for families facing a crisis so they will choose life for their unborn baby.



The Cradle of Hope Giving Tree was created so all ages could participate in experiencing the joy of giving.

How does it work? Create your own "Giving Tree" and we will supply you with the wishes (tags) that can be placed on your tree branches. Share these wishes with family and friends and allow them to pluck the wishes they

hope to fulfill. If you prefer to receive wishes from the Cradle of Hope Giving tree, staff will pluck these wishes and mail them directly to you. Once you pick a wish, you can shop for the item. Once you gather items together, contact us to drop them off at Cradle of Hope. All items will be used to provide encouragement and support to families facing a crisis so they will choose life for their unborn baby.

Make this a family or group project by reading the book, "The Giving Tree," by Shel Silverstein and then gathering the items together. You will feel good knowing that you helped save the life of a baby and transform a family's future!

Supermarket Support Family Support Bags

COMING SOON...Cradle of Hope is in the process of partnering with local supermarkets throughout Minnesota to have "Family Support Bags" available for purchase the next time you are grocery shopping. Items include essential baby items such as newborn diapers, wipes, pacifiers, bibs, bottles, blankets, onesies, clothing and rattles that will be used to fill a Wellness Basket. Each basket will be given to a first time mom who recently chose to face her crisis and give birth to her baby! If bags are not available where you shop, you can create your

own "Family Support Bag." Once your bag is ready, contact us to plan a day to drop your items off at Cradle of Hope. For more ideas, you can check out the NEW Cradle of Hope website "Ways to Give."



Saving Lives Spotlight

Clement "Clem" and Molly Commers are ordinary people who got some literature in the mail from Cradle of Hope one day. They decided to get involved because they wanted to help families who were struggling including pregnant women who were questioning if they should give birth to their babies. Clem and Molly recently participated in Cradle of Hope's annual Pot O' Gold Sweepstakes held in March and were selected as the 2016 grand prize winners, receiving \$1,000. They graciously decided to donate their winnings to Cradle of Hope so more families could be helped and more lives could be saved. "We were happy to donate it!"



Thank you for supporting us! Save \$10 on tickets to our 2017 Spring Event!

Cradle of Hope will be hosting our 1st Annual Spring Event in 2017. If you are looking forward to a fun evening out without the kids then this is for you! As a token of our appreciation for your support, we would like to extend to you a "Donor Discount". Use coupon code DTY10 when purchasing your tickets to save \$10 off your ticket purchase. If you have any questions be sure to check out the NEW Cradle of Hope website at www.cradleofhope.org.

Stay tuned for information about Autumn Fest, which will be returning in the fall of 2017.

MISSION

Cradle of Hope encourages life by providing financial aid to women and babies in crisis, especially those women who might not choose life because of financial pressures.

2016 Board

Chris Vatsaas - President
Joe Kueppers - Vice President
Kristen Hanson - Secretary
Brian Dobie - Treasurer
Emily Anderson
Laurie Murphy
Amanda Meyer

Meet the CoH Staff

Executive Director



Darlene Kopesky is honored to partner with caring individuals who are passionate about giving unborn babies a chance at life. She earned a Bachelor's degree from Boston University and a Master's degree from Cambridge College. She joined Cradle of Hope with over 15 years leading programs for homeless children and families for The Salvation Army in Cambridge, MA. She is enjoying life in Minnesota with her husband and two young children.

Program Director



Brittany Wiese was born and raised in Mankato, MN. She attended Minnesota State University, Mankato and has spent her time since graduating invested in the field of human and social services. She is currently pursuing a Masters in Health Service Administration. When she is not busy studying, she enjoys spending time with her family and friends, being active outdoors, and taking in the sights of Minneapolis-St. Paul!

Cradle of Hope
1970 Oakcrest Ave, Suite 300
Roseville, MN 55113
651-636-0637
cradleofhope@cradleofhope.org
www.cradleofhope.org